

Rs:1511 - Parcel - New Stanton Hotel030\_Design (DWG)1511 - Parcel-New Stanton - Base.dwg Plotted: Jul 11, 2016 - 4:13pm



NOW OR FORMERLY  
D. PROPERTY, LLC ETAL  
RESIDUAL PARCEL  
PARTNERSHIP SUBDIVISION  
TON SQUARE PLAN #7)  
P.B.V. 91, PG. 153  
ZONED B-1

NOW OR FORMERLY  
BOROUGH OF NEW STANTON  
PARCEL 12

NOW OR FORMERLY  
KN NEW STANTON, LLC

NOW OR FORMERLY  
KN NEW STANTON, LLC  
PARCEL 4-A-3-A  
STANTON SQUARE PARTNERSHIP SUBDIVISION  
(STANTON SQUARE PLAN #6)  
P.B.V. 90, PG. 2210  
ZONED B-1

NOW OR FORMERLY  
REGENCY HOTELS, INC.  
PARCEL 4-A-3-B  
STANTON SQUARE PARTNERSHIP SUBDIVISION  
(STANTON SQUARE PLAN #6)  
P.B.V. 90, PG. 1793  
ZONED B-1

NOW OR FORMERLY  
BOB EVANS FARMS, INC.  
STANTON SQUARE PARTNERSHIP SUBDIVISION  
PARCEL 4-A-2  
(STANTON SQUARE PLAN #5)  
P.B.V. 90, PG. 1793  
ZONED B-1

NOW OR FORMERLY  
E.L. AND PROPERTY  
STANTON SQUARE PARTNERSHIP SUB.  
(STANTON SQUARE PLAN #5)  
P.B.V. 90, PG. 1793  
ZONED B-1

NOW OR FORMERLY  
CHARLES . & GEO.  
TAX ID. 64-04-04-  
ZONED L

#### SLOPES TABLE

NUMBER	SLOPE	COLOR
1	0-15%	
2	15-25%	
3	>25%	

#### KEYED NOTE

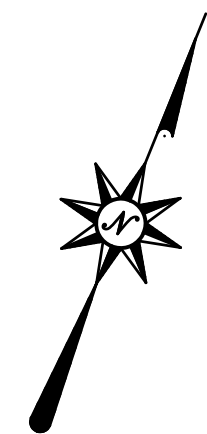
1 EXISTING WETLANDS

#### SOIL LIMITATIONS NOTE

ALL SOILS ON SITE ARE CONSIDERED  
LANDSLIDE-PRONE BASED ON THE PA DEP EROSION  
AND SEDIMENT POLLUTION CONTROL PROGRAM MANUAL



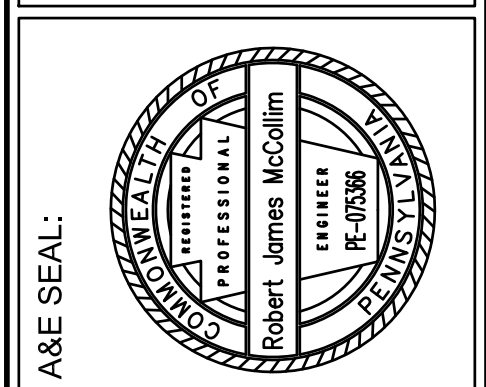
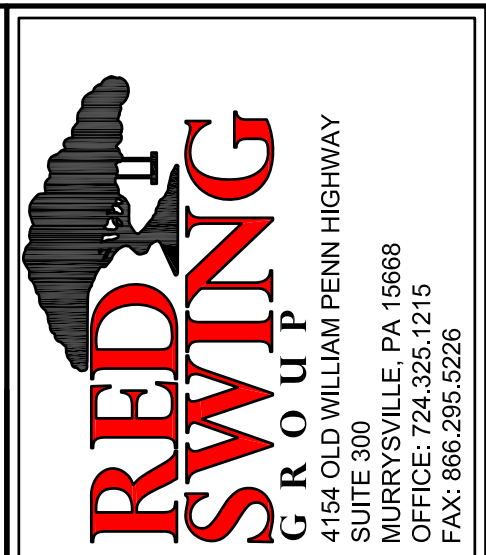
Know what's below.  
Call before you dig.



GRAPHIC SCALE  
0 20 40 80  
( IN FEET )  
1 inch = 40 ft.



CALL BEFORE YOU DIG!  
PENNSYLVANIA LAW REQUIRES  
3 WORKING DAYS NOTICE FOR  
CONSTRUCTION PHASE AND 10 WORKING  
DAYS NOTICE IN DESIGN STAGE.  
STOP CALL  
PENNSYLVANIA ONE CALL SYSTEM, INC.  
1-800-242-1776



ACKNOWLEDGEMENT OR "SIGN-OFF" BY  
PARTIES TO THE CONSTRUCTION  
DOCUMENTS IS REQUIRED FOR THE  
ALTERATION OF LEASE TERMS.  
THE INFORMATION CONTAINED IN THIS  
SET OF DOCUMENTS IS PROPRIETARY  
BY NATURE. ANY USE OR DISCLOSURE  
OTHER THAN THAT WHICH RELATES TO  
THE PROJECT FOR WHICH IT WAS  
PREPARED, WITHOUT THE WRITTEN  
CONSENT OF THE ENGINEER, CONSTITUTES  
A VIOLATION OF LAW FOR ANY  
PERSON, UNLESS THEY ARE WORKING  
UNDER THE DIRECTION OF A LICENSED  
PROFESSIONAL ENGINEER, TO ALTER  
THIS DOCUMENT.

**HAMPTON INN & SUITES**  
BAIR BOULEVARD  
NEW STANTON, PA 15672  
WESTMORELAND COUNTY, PENNSYLVANIA

REVISIONS:	MARK	DATE	REVISOR	DESCRIPTION
1		7/11/2016		

PROJ NO: 1511  
SCALE: AS SHOWN  
DATE: 5/18/2016  
DESIGNED BY: RJM  
DRAWN BY: MJN  
CHECKED BY: CKM  
SHEET TITLE:  
**EXISTING  
NATURAL  
RESOURCES  
MAP**  
SHEET NO.  
NR1.1